



epitiro

GLOBAL BROADBAND BENCHMARKING

# Femtocell Test Suite

## Full Cycle Testing

Unlike operator-owned and operated RNC - Node B links, femtocells will typically use residential broadband connections - sharing contended backhaul, often on un-managed Cable or DSL networks, for connectivity to the mobile network core.

From device manufacture, through customer deployment and finally In-life operation there are a whole host of service quality challenges to be addressed. EpiTiro's Femtocell Test Suite can help at each stage in this life-cycle.

### FemtoLab™

FemtoLab™ is the most complete Lab test solution for DSL, Cable or Ethernet-based testing of any femtocell available today - providing a powerful and flexible automated environment for the full range of test scenarios including functional Voice and HSPA performance and scalability testing.

### FemtoLite™

The FemtoLite™ pre-deployment service analyses ISP capabilities from where it matters most – the customer premises. Software agents download to a customer PC and qualify the connection prior to installing a femtocell.

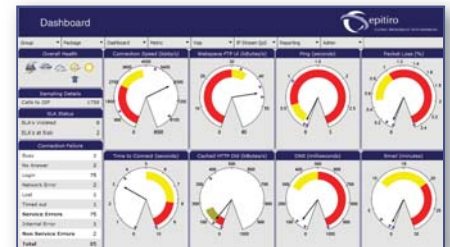
### ISP-IT™ Femto

ISP-IT™ Femto provides operators with in-life monitoring and service quality metrics of any national or international femtocell delivery network. EpiTiro's unique software provides real-time insight into femtocell performance whether on your own or a un-managed third-party broadband network .

### Reports

EpiTiro's renowned report generating capability allows any user to quickly and easily see test performance data in the format of their choice. The powerful and flexible report generation, including Web browser access to all reports, enables the following views;

- Trend Testing - Profile the behaviour of your hardware with continuous long term testing at different times of the day, week, or month.
- 'At a glance' insight of your competitors strengths and weaknesses
- Multiple levels of drill-down detail right down to a single femtocell test call
- Remote-control and real-time availability reporting of all agents



## The Complete Test Solution

The successful uptake of femtocells could be the next evolutionary step for mobile operators aspiring to have a presence in the home. Though the potential for new and exciting lines of business is real, so too is the need to manage customer experience.

Epitiro's Femtocell Test Suite empowers mobile operators to intelligently and quickly go from lab test through field trial to full service launch.

## Look Who's Talking

Epitiro's clients include top ISPs, regulators and telcos. Companies such as BT, Tiscali, Ofcom, Virgin, Telecom New Zealand, Telefonica O2, Orange and others use Epitiro's technology and Software as a Service (SaaS) capability to measure and manage customer experience.



### FemtoLab™

- Complete Lab Testing Capability
- PESQ Voice Quality MOS
- Echo Detection
- HSPA Metrics
- Multi-User Capability
- TCP Throughput
- Broadband Metrics

### FemtoLite™

- Understand ISP Profiles
- Software-based agents
- Scalable 1 to infinite
- Software as a Service (SaaS) model

### ISP-IT™ Femto

- In-Life Performance Monitoring
- Understand Competitor Capability
- Voice, Video, Data, HSPA Metrics
- Identify Traffic Management Issues
- Software as a Service (SaaS) model

### Reporting

- Web Browser-based accessible anywhere
- Generate Bespoke reports
- Easy to Generate and share
- Alarm Notification, Trends other Views as standard



#### Epitiro (UK)

Epitiro House, 10 Raleigh Walk  
Waterfront 2000, Brigantine Place  
Cardiff CF10 4LN

Tel: +44 (0) 870 850 6563

#### Epitiro (Ireland)

Unit 17, Tom Crean Business Centre  
Kerry Technology Park, Tralee  
County Kerry, Ireland

Tel: +353 (0)66 7129794

#### Epitiro (France)

19 Bis - 21, Blvd Haussmann  
75009 Paris  
France

Tel: (+33) (0) 1 56 03 66 80

#### Epitiro (New Zealand)

Level 27 PWC Tower  
188 Quay St, Auckland  
New Zealand

Tel: (+64) (0) 9 363 2995